



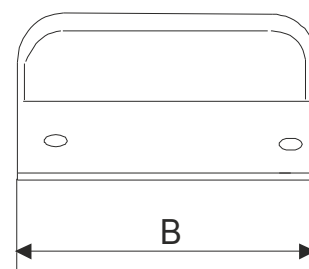
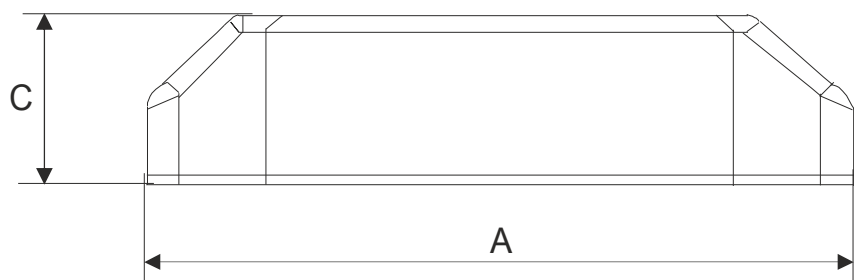
New generation electronic transformers are designed especially for powering 12V halogen lighting systems (short circuit and overload protection). They are recommended in places where minimal dimensions weight are required as well as a stable output voltage and a soft start. The transformers are made with Class II insulation and protection grade IP20, maximum ambient temperature 40°C. Manufactured in compliance with PN-EN 61347-2-2, PN-EN 55015, PN-EN 61547, PN-EN 61000-3-2, PN-EN 61000-3-3.



Rated power: 60; 105; 150; 210 W

Rated voltage PRI: 230V 50/60Hz

Rated voltage SEC: 11,5V



Type	Power [W]	Dimensions [mm]			Weight [kg]
		A	B	C	
ZHA 60LV	60	101	39	20	0,08
ZHA 105LV	105	125	43	20	0,12
ZHA 150LS	150	150	40	30	0,30
ZHA 210LS	210	160	46	31	0,33

As a result of constant development of product construction and changes concerning technical requirements, Breve Tufvassons reserves the right to change the parameters mentioned above.